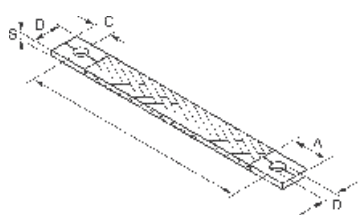


TRECCE DI MASSA IN ALLUMINIO

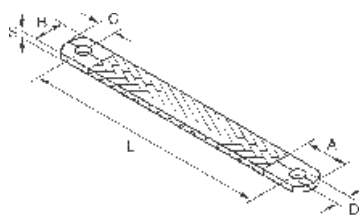
ALUMINIUM EARTHING STRAPS

- ▶ Terminali in lamiera di alluminio
Aluminium connecting pads
- ▶ Filo elementare | *Single wire:*
Aluminium 1050 A / EN-AW1370
- ▶ **UTILIZZO:** collegamenti equipotenziali di pannelli fotovoltaici per evitare fenomeni di elettrocorrosione.

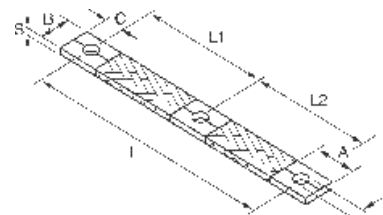
USABLE FOR: solar panel equipotential link, withstand at the electrocorrosion



Terminale diritto D
Standard terminal D



Terminale raggato T
Curved terminal T



Terminale diritto D
Standard terminal D

Flat braid uncoated aluminium:

nominal section
single wire diameter
construction (crossing 53 x dm ± 3mm)
dimensions

16,0 mm ²	-0,001 / +0,003mm
0,30mm	
32x7x0,30	
15x2,5mm	width ± 0,5mm

Earthing connection:

Hole to hole length (dimension L)
Diameter of the holes (dimension D)
Connecting pads (dimensions BxA)

150mm	± 1,0mm
7mm	± 0,5mm
17x23mm	± 0,5mm

Conductor characteristics:

- Aluminium braid EN-AW1370 (1050A)
- Aluminium strip EN-AW1370 (1050A H18)

USABLE FOR:

Photovoltaics module PV modules
Solar panel equipotential link withstand at the electrocorrosion

Aluminium	Sezione mm ² <i>Section</i>	Ø Filo <i>Wire dia.</i>	A mm.	B mm.	C mm.	D mm.	S mm.	L mm.	L1/L2 mm.
CA16-100/030/07	16	0,30	23	17	10	7	3,0	100	-
CA16-150/030/07	16	0,30	23	17	10	7	3,0	150	-
CA16-200/030/07	16	0,30	23	17	10	7	3,0	200	-
CA16-100+100/030/07	16	0,30	23	17	10	7	3,0	200	100
CA16-150+150/030/07	16	0,30	23	17	10	7	3,0	300	150
CA16-200+200/030/07	16	0,30	23	17	10	7	3,0	400	200

Larghezze, lunghezze, sezioni e forature non comprese in tabella vengono allestite su richiesta.

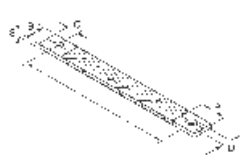
ISOLAMENTO A RICHIESTA: • Silicone SYL
• Poliolefina nera PLF

Widths, lengths, sections and bores are not included in table above, they are provided at request.

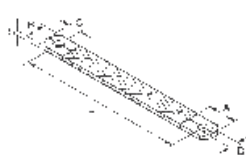
INSULATION UPON REQUEST: • Silicon SYL
• Black polyolefin PLF

TRECCE DI MASSA SPECIALI SPECIAL GROUNDING STRIPS

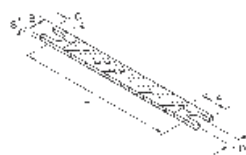
- ▶ Allestimento su richiesta | *Manufactured upon request*



Terminale diritto D
Standard terminal D



Terminale raggato T
Curved terminal T



Terminale a forcella F
Fork terminal F

